

# PTC Arbortext® Editor™

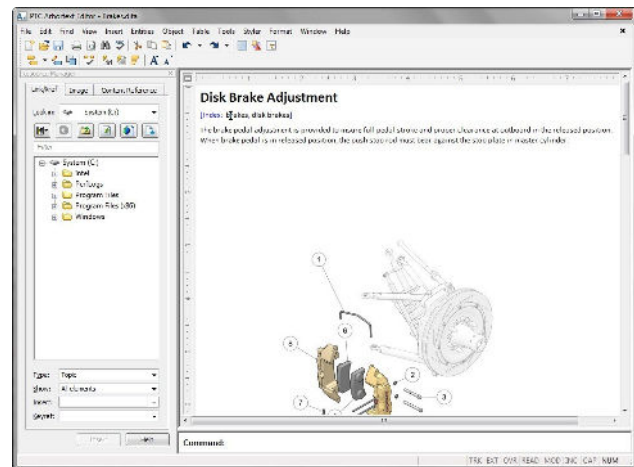
## Author Reusable, Structured Content to Deliver High-Quality Product and Service Information

**PTC Arbortext Editor, the industry's most adopted XML authoring software, helps you create contextual, up-to-date, product-centric content.**

As the importance of service excellence in driving product success becomes widely recognized, more and more companies are relying on Arbortext Editor to generate high-quality, accurate and up-to-date product and service information. With Arbortext Editor, authors create contextual, product-centric content for support organizations and end-users. This content is provided in the media format desired – including interactive service manuals, eLearning materials, mobile-optimized parts catalogs, operator manuals, web-based training programs and installation guides.

Structured authoring with Arbortext Editor enables the creating and editing of XML component-based content and assemblies, for easy reuse enterprise-wide – so users don't waste time re-inputting text or applying identical changes to multiple versions of the same copy. Integration with Windchill®, PTC's leading Content Management System, provides contextual information aligned with the original product definition – to ensure information accuracy, timeliness and consistency. Arbortext Editor supports industry standards like DITA and S1000D, and allows authors to incorporate interactive, CAD-driven 2D/3D technical illustrations.

In short, by enabling the creation of product-centric, topic based content, Arbortext Editor allows users to generate high-quality product and service information that helps optimize the operation, service and repair of products throughout their lifecycles.



Arbortext Editor enables easy editing of XML content while incorporating illustrations.

### Key Benefits

#### Create high-quality, media-neutral product and service content

- Leverage content across multiple media formats to meet the needs of various organizations and end-users
- Automate the delivery of multi-language and multichannel product and service information, including the use of interactive 2D and 3D illustrations
- Leverage out-of-the box applications to produce detail-rich information in compliance with complex industry standards –with minimal programming
- Provide single instances of approved product and service information – including translations – for reuse throughout the authoring process, thereby eliminating duplication costs

- Automate the production process through out-of-the-box integration with Windchill, a leading Content Management System
- Accelerate solution deployment and management with the industry's only fully integrated, end-to-end dynamic publishing solution

### Improve product and service information accuracy

- Leverage up-to-date engineering data and maintain associativity throughout the authoring process to reduce product and service information inconsistencies
- Mark any portion of content for a specific purpose or audience, to produce information that meets the specific needs of each individual
- Minimize manual effort required to produce and deliver product and service information

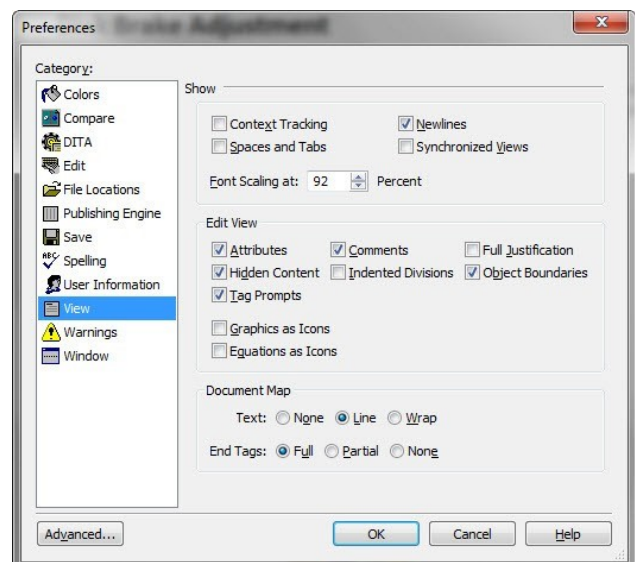
### Increase author productivity

- Create reusable XML component-based content
- Free authors from manually designing content by leveraging Arbortext's automatic formatting capabilities
- Reuse information easily by linking content to its original source instead of copying and pasting
- Eliminate the time wasted applying the same changes to multiple copies of the same information
- Reduce the cost of updating information
- Save time by not having to constantly reformat content based on output requirements

## Features

### Exceptional usability

- Re-use of content across multiple media formats
- Robust table handling, including table borders support and table customization
- Ability to perform advanced searches, including find and replace attributes
- Extensive language support for spell checking
- Integrated functionality for content management
- Extensive preferences to allow each user a personal working environment



Arbortext Editor's Preferences allow each user an easily configurable environment.

### Schematron support

- Leverage an industry standard
- Identify business rules and help authors recognize user errors

### Comprehensive support for DITA

- Support for the latest DITA 1.3 specification
- Highly versatile DITA Resource Manager provides quick access to Windchill content
- Support for key references to simplify working with links
- Preview images before inserting into content
- Fast, simple authoring of maps and topics

### Structured editor with real-time validation

- Familiar, intuitive user interface with common word-processing capabilities, such as change tracking, drag-and-drop and keyboard macros
- Simple copy/paste from MS Word® and MS-Excel

### Interactive and illustrative content

- Incorporate intelligent graphics into any type of content, including product and service information
- Easily link to different views stored within an intelligent graphic
- Support for creation and publishing of hotspot links
- Embed animations and illustrations – 2D, 3D, animations or mixed – to support Web, interactive and page-based content

### Dynamic content support

- Produce customized publications using conditional text for specific audiences from a master document

### Global collaboration

- Provide over 25 languages of content, character sets and spelling dictionaries

### Standards support, with native support for XML

- Robust standards support, including XML, SGML, XSL, XML Schema, Schematrons, XPath, XInclude, DOM and other next-generation web standards for sharing content, data and applications
- Supports OASIS, CALS, HTML and Arbortext table models

### Out-of-the-box applications

- Technical Information Application
- Toolkit for Aerospace & Defense Specification S1000D available separately

### Highly configurable and customizable

- Create and customize dialogs and toolbars through XML configuration files and embedded ActiveX controls
- Access majority of Arbortext Editor's capabilities using its APIs either directly or through COM
- Supporting many different programming languages, including C/C++, Java, JScript, JavaScript, Visual Basic, VBScript and PerlScript

### Broaden Arbortext Editor usage

- Integrated with Arbortext IsoView® and Creo® View
- Embed Arbortext Editor as an ActiveX control in a browser or install as a stand-alone client application
- Launch Arbortext Editor directly within Windchill for fast XML authoring and management
- Simpler deployment of Arbortext Editor across the enterprise with the use of its deployment directory and its compact version, which offers a smaller install footprint for situations where network bandwidth is important

### FlexNet licensing

- Same licensing utility used across all PTC software, to allow user flexibility with software licensing configurations
- Licenses available for use on any machine within a network

© 2019, PTC Inc. (PTC). All rights reserved. Information described herein is furnished for informational use only, is subject to change without notice, and should not be taken as a guarantee, commitment, condition or offer by PTC. PTC, the PTC logo, Product & Service Advantage, Creo, Elements/Direct, Windchill, Mathcad and all other PTC product names and logos are trademarks or registered trademarks of PTC and/or its subsidiaries in the United States and other countries. All other product or company names are property of their respective owners. The timing of any product release, including any features or functionality, is subject to change at PTC's discretion.

# PTC Arbortext® Styler™

## Create stylesheets to automatically deliver predictable, high-quality product information in multiple languages and media output

PTC Arbortext Styler is an innovative stylesheet tool that enables designers to configure stylesheets for automatic publishing of structured content using a single source of style. The stylesheets you create support one or multiple output media, with-out programming, enabling you to improve the quality and consistency of your information.

Stylesheets created in Arbortext Styler are used by Arbortext publishing software to transform XML content into output for print, PDF, HTML and Web pages, HTML Help, Microsoft® Word® and wireless devices. Arbortext Styler also provides foreign language support including Right to Left, enabling you to easily and automatically layout and publish localized product information.

### Benefits

#### Ensure consistent, high-quality product information

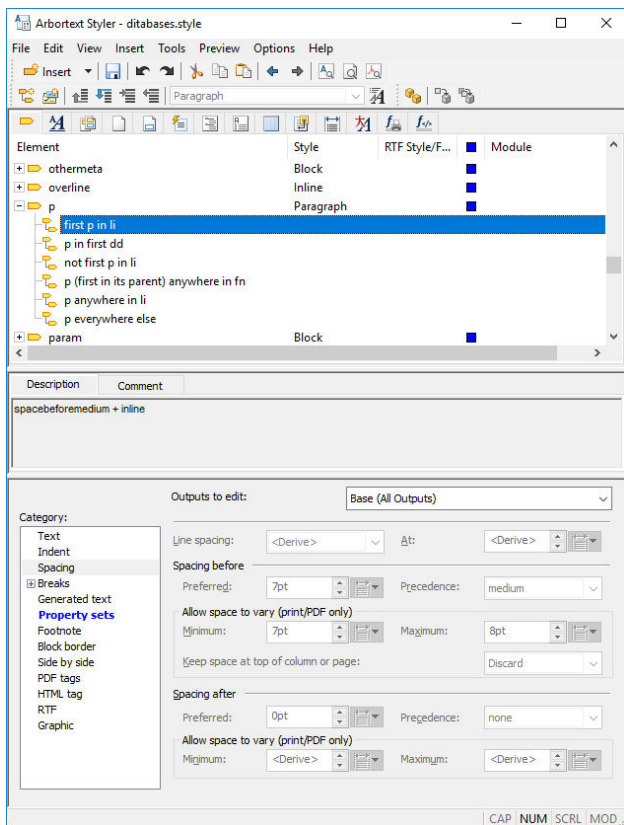
- Develop and enforce stylesheets to automate information layout and delivery
- Publish complex product information to one or multiple media—from the same stylesheet—with-out programming
- Automate layout tasks for multiple language content and regional • formatting specifications

#### Increase designer productivity and value

- Provide a single, easy-to-use interface for your comprehensive product information delivery requirements
- Simplify stylesheet creation across media to minimize programming
- Update stylesheets easily when requirements change
- Configure stylesheets to support multiple media types and formats automatically

#### Reduce publishing production costs and cycle times

- Create a single-source of style to eliminate the development, maintenance and disparity of mul-tiple stylesheets
- Eliminate desktop publishing costs for document production
- Extend stylesheets by writing styling criteria for specific output media through source-code edits



Arbortext Styler provides a single, easy-to-use interface for all product information layout requirements to consistently publish high-quality information across multiple media types automatically.

## Features

### Rapid Stylesheet Creation

- Simplify initial setup with style wizards
- Intuitive user interface
  - Page layout controls include page-size, margins, columns, footnotes and page numbers
  - Tabbed panels for elements, page sets, size definitions, headers and footers, and combined fonts
  - Tabbed sections for applying text formatting for elements, element contexts and conditions
  - Simply create additional contexts and conditions without needing to write XPath expressions or testing code

- Highlight source-code edits
- Enable multiple levels of undo and redo
- Use and track 'property sets' to group together formatting properties into reusable components
- Add comments to stylesheet components to help development and maintenance

### Multichannel Support

- Support for multiple output types, such as print, PDF, Web, Microsoft Word and HTML Help, from a single stylesheet
- Define styles for all output types or for a specific output
- Preview content for print, PDF and Web media
- Support for configuring PDF bookmarks and populating PDF document properties
- Enable HTML 'chunking'
  - Split documents during publishing into logical chunks based on document hierarchy
  - Define chunk boundaries and configure tables of contents for chunked outputs in Arbortext Styler
  - Support for DITA by using input file or content management object structure to define the initial chunk boundaries
- Output file metadata for inserting metadata into HTML, chunked HTML, and PDF outputs

### Conditional Formatting

- Set up conditional styling based on element context, attribute values and content tests
- Base styling on multi-level conditional tests

### Standards Support

- Import of existing FOSI stylesheet
- Export of multiple stylesheet formats, including XSL-HTML, CSS, XSL-FO, and FOSI, and Arbortext Advanced Print Publisher composition engine

### Automatically Generated Content

- Format tables of contents, indexes and other automatically generated lists, such as table lists and figure lists
- Enable automatically generated text, including: bullets and list numbers; text preceding or following an element; header/footer content; repeating titles; cross-references; and indexes with language-specific collation rules
- Edit generated content for each entry level to fine tune output
- Add a new section between Automatically Generated Content and Modular.

### Multi-language Formatting

- Easily support Right to Left languages by mirroring page lay out definition

- Use multiple numbering schemes to comply with regional numbering rules
- Define combined fonts for getting clearer results when mixing multiple types of characters
- Generated text can be exported as a separate file for easy translation to create multi-language stylesheets

### Modular

- Use named property sets for modularity and reuse
- Support for modular stylesheets for sharing common formatting definitions between multiple document types

### Extensible

- Modify the style code directly for specialized applications using an extensive mechanism
- Use source edits to provide tight control of output for specific media
- Embed JavaScript custom functions for HTML output

© 2019, PTC Inc. (PTC). All rights reserved. Information described herein is furnished for informational use only, is subject to change without notice, and should not be taken as a guarantee, commitment, condition or offer by PTC. PTC, the PTC logo, Product & Service Advantage, Creo, Elements/Direct, Windchill, Mathcad and all other PTC product names and logos are trademarks or registered trademarks of PTC and/or its subsidiaries in the United States and other countries. All other product or company names are property of their respective owners. The timing of any product release, including any features or functionality, is subject to change at PTC's discretion.

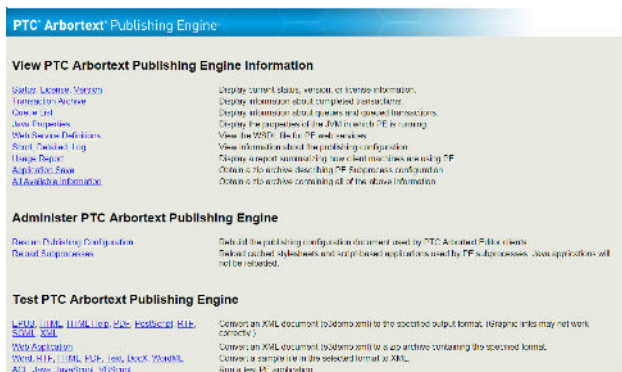


# PTC Arbortext® Publishing Engine™

## Automatically Assemble and Publish Tailored Information to Multiple Audiences in Interactive and Page-based Formats

Automate your publishing processes in order to customize information, lower production costs, accelerate information time-to-market, and ensure information consistency.

The PTC Arbortext Publishing Engine is a server-based, single system that provides the end-to-end ability to intelligently pull XML and unstructured data from content management systems and other business applications, profile that content for targeted audiences and different types of deliverables, and automatically generate service information and publications. Arbortext Publishing Engine assures that you deliver the highest-quality, consistent product and service information throughout a product's lifecycle.



Arbortext Publishing Engine automatically pulls relevant product information from your business applications, and assembles and publishes the customized content to one or multiple media formats.

### Benefits

#### Deliver customized and consistent technical information

- Reduce the amount of time and effort your customers spend finding the relevant information for their needs
- Deliver the appropriate media for enhancing your customer's experience with your information
- Increase first-time repair rates and reduce technician's errors, with up-to-date, model-specific service information

#### Minimize publishing costs

- Automate output to multiple media to eliminate disparate, manual publishing processes
- Eliminate expensive, labor-intensive layout and design tasks associated with multiple document types, languages and media formats
- Reduce costs associated with printing and distributing paper-based product information

#### Decrease time to deliver information

- Automate the publishing process to reduce publishing cycle time from weeks to minutes
- Deliver updated, accurate technical documentation in real-time across all of your target media



## Features

### Manipulate, aggregate and profile content

Convert and merge content automatically to provide consistent, tailored and valid information, fully prepared for publishing

- Profiling — Filter content for specific audiences, geographies, product models, etc. based on intelligence added to the content during the authoring process
- Content Pipeline — Further customize your document assembly and composition processes by using the content pipeline infrastructure

### Professional publishing

Ensure high quality, automated information delivery in the format, language and output required to complete one or several parallel publishing jobs

### Enforce stylesheet rules

- Automate the layout process, so you can quickly and consistently produce publish-ready content for delivery
- Format every document type to a specific design configuration automatically regardless of text length, language or intended output – without human intervention
- Ensure information consistency across media types automatically
- Publish using stylesheets created in Arbortext Styler™
- Apply styling rules from DITA®, S1000D® or other standards
- Layout localized content, automatically, to eliminate manual desktop publishing
  - Apply document flow and spacing considerations
  - Enable publishing for Chinese, Japanese, Korean, Arabic, Hebrew and Thai, as well as all western European alphabets

### Professional Print Output

- Enable fast, flexible formatting for printed documents
- Multiple document layouts
  - Single- or two-column formats with column spanning and balancing, fold-out page formats, automatic generation of front and back matter and white space balancing, widow and orphan controls
- Tables of contents at document-level and chapter-level, lists of figures, indexes and seven levels of keeps priority
- Long-document support for table of contents, indexing and chunking

### Multichannel delivery

- Generate one or several outputs simultaneously to Web, interactive and page-based formats
- Dynamic information delivery
  - Output to all media formats dynamically based on document stylesheet or configuration
  - Transform technical illustrations and animations for the appropriate media, automatically
- Publish from a single-source content to multiple output formats
- Publish all valid XML files, automatically
- Deliver interactive content, including 2D and 3D technical illustrations or animations

### Administration

- Access administration tools for configuring and maintaining the publishing environment and monitoring publishing requests
- Job management
- Error-reporting
- Capacity reservation management

## Standards support

Ensure support for the following standards:

- XML, SGML, XSL, XPath, XInclude, SVG, and the document object model (DOM)
- Java Web Services and HTTP

## Related products

### Arbortext Styler™

A unique stylesheet design tool, providing designers with the capability to create XML-based stylesheets that automate publishing, without labor-intensive programming. Stylesheets created in Arbortext Styler can be used by Arbortext Publishing Engine to transform XML content into localized HTML and Web pages, print or PDF.

### Arbortext Advanced Print Publisher™

A standalone print composition application which compliments the embedded version in Arbortext Publishing Engine. The standalone product is used for template development, WYSIWYG document finishing as well as desktop publishing tasks. It provides a powerful, flexible and highly configurable set of tools to deliver high quality paged output in both automated and manual workflows.

### Arbortext Architect™

A development tool providing configuration, development and prototyping capabilities to help build Arbortext applications. This developed application is then used within the Arbortext solution for creating, publishing and delivering documentation and publications.

© 2019, PTC Inc. (PTC). All rights reserved. Information described herein is furnished for informational use only, is subject to change without notice, and should not be taken as a guarantee, commitment, condition or offer by PTC. PTC, the PTC logo, Product & Service Advantage, Creo, Elements/Direct, Windchill, Mathcad and all other PTC product names and logos are trademarks or registered trademarks of PTC and/or its subsidiaries in the United States and other countries. All other product or company names are property of their respective owners. The timing of any product release, including any features or functionality, is subject to change at PTC's discretion.